

# Refrigerator News

February 8, 2015



## This Week at Lincolnshire

### Monday, February 9

9:15 – 10:45 Women's Bible Study

### Tuesday, February 10

7:00 p.m. Men's Bible Study  
Home of Dick Strole

### Wednesday, February 11

10:30 Pastoral Support  
7:15 p.m. Choir

### Thursday, February 12

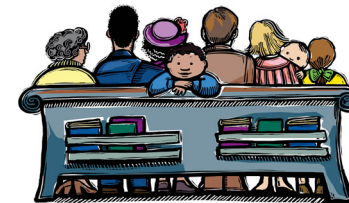
9:30 Calling & Discernment  
7:00 Outreach and Caring



## ATTENDANCE

January 4	82
January 11	92
January 18	93
January 25	89
January Average is	89.

Keep in mind that average annual attendance figures are influenced by bad weather, outdoor worship services and holiday services.



Average attendance for the year 2014 was 87.  
Average attendance for the year 2013 was 92.

Total membership for the year 2014 was 152. The total does not include 15 associate members and 29 separated members but does reflect the addition of new members and/or member deaths.

---

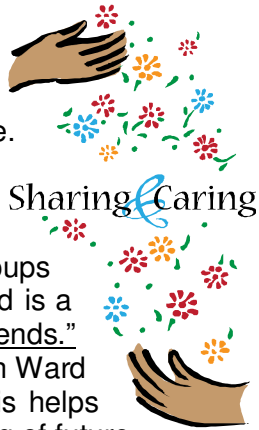
We continue to pray for those who remain homebound, unable to get out due to medical conditions and for whom the hours inside are probably quite long. We hold in prayer those who are hospitalized or are in nursing facilities and for their families as they travel to and from homes and hospitals on icy roads and in very cold temperatures. We also pray for those who are caregivers who nourish and sustain the hopes of these people with their phone calls, cards, meals and other signs of caring. As someone said, *"God ministers to us so gently, so stolenly, as it were, with such a quiet, tender, loving absence of display, that we often drink of his wine, as those wedding guests drank without knowing from whence it comes -- without thinking that the giver is beside them, yea, in their very hearts."*

### From Calling & Discernment...

Each year you are invited to suggest up to three persons you see as gifted to serve on the Calling & Discernment Team. The team is responsible for matching persons to leadership and service needs of the congregation. Candidates should know people's spiritual gifts, interests and talents, be familiar with the ministries of the church and be committed to serve with a sense of "call". On February 15 & 22, you will be asked to complete a bulletin insert offering your suggestions. Your part in the process is appreciated. - Marty Kaylor, Chair

### In the news....Caregiving Groups.

We continue to refine the E-3 caregiving groups. There has been confusion over the difference between who the "caregivers" are and who the "caregiving groups" are. To help clear up this state of uncertainty, in the future the "Caregivers" are the group leaders themselves. They will meet as a group to discuss the activities of their individual groups. The members within individual groups will be known as "faith friends." For example, Jan Ward is a Caregiver and her group is known as "Jan's faith friends." Marty Kaylor will call for meetings of the Caregivers, Jan Ward will call for meetings of her faith friends. We hope this helps clarify the issue. Attention will be given to the scheduling of future events so that the appropriate name/title is used.



If you have not seen the video that was produced by the youth (which also starred Lincolnshire's youth!) and that was played on Youth Sunday or if you would just like to see these future *stars* again, the video is available for your viewing on Lincolnshire's website: [www.lincnotes.org](http://www.lincnotes.org). This website contains a wealth of information and inspiration. It includes past sermons by Pastor David and is an excellent way to listen to messages or news you have missed.

**HI! My name is Zoe Vorndran!**

**I am a senior at Heritage Jr/Sr. High School.  
My favorite subjects are chemistry and history.  
So far, I've been in the Top 10 of my class through high school.  
I am planning to go to Manchester University  
or IPFW to pursue a degree in science.  
I am also an active member of the church Youth Group!  
I love figure skating with a focus on ice dancing.  
My all time favorite TV show is "The Big Bang Theory."  
And what else do I love?  
I LOVE chocolate and candy canes!  
And what do I dislike? Hmmmmm....mushrooms and squash!**